

2019-2020



Annual Report

For God
 Spirituality
 Hope
 Initiative
 Embrace
 Women
 Safety
 Skills
 Care
 Knowledge
 Volunteerism
KINGS HOPE DEVELOPMENT FOUNDATION
 inspiration
 Community
 Love
 Networking
 My Hands
 Support
 Empower
 Service
 Ubuntu
 Selflessness
 Children

THE KING'S HOPE PURPOSE:

TO EXPAND THE KINGDOM OF GOD IN A PRACTICAL MANNER BY IDENTIFYING AND ADDRESSING THE NEEDS OF THE OLIEVENHOUTBOSCH COMMUNITY WITH RESPECT, DIGNITY AND THE LOVE OF JESUS CHRIST.

NPO number 036 443 | Tax Reference Number PBO 18/11/13/3464 | Plot 51 | Olievenhoutbosch, PO Box 55810 | Wierda park | 0149 | Tel (+27 12) 652 0033 | Email: info@kingshope.co.za (Association Incorporated Under Section 21) | (Registration number 2002/000146/08)



The Location

The Location of Olievenhoutbosch

Olievenhoutbosch, also known as 'Olieven', is a growing township in Centurion which was established in the 1990's, on the south of Pretoria in Gauteng, South Africa. It is located close to Midrand on the R55 route to Sandton. Olievenhoutbosch has the highest unemployment rate in Region 4 of the City of Tshwane Metropolitan Municipality. Olievenhoutbosch mostly provides the workforce servicing neighbouring urban homes with menial jobs such as housekeepers, trade worker and gardeners. The place is a hive of entrepreneurial activities with many utilising their skills to generate income in the face of high unemployment in the country. It is a high density area with low cost housing and a number of surrounding informal structures rented out to both locals and foreign nationals looking to access employment opportunities. The area has limited amenities for the dense population and continues to experience a high volume of social ills such as crime, high alcohol consumption and different forms of abuse affecting women and children.

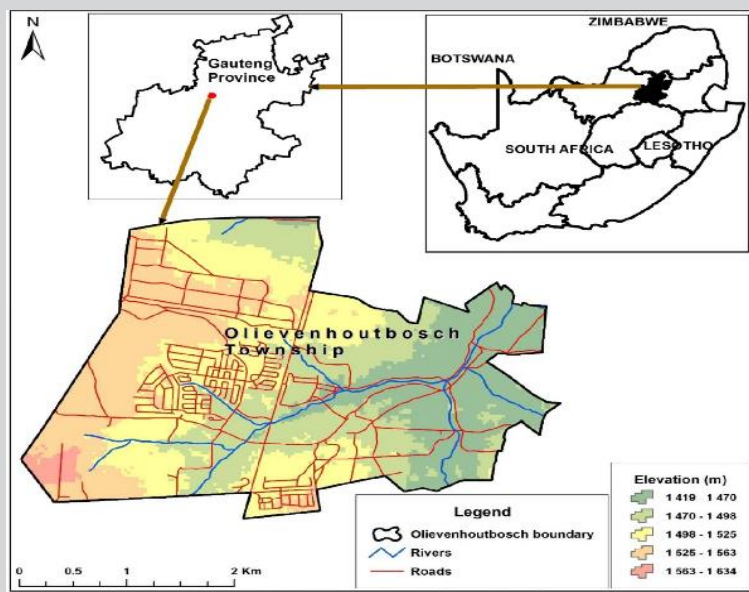


Figure 3.1 Locational map of Olievenhoutbosch Township (Source: created by)



Table of Contents

| | |
|---|----|
| 1. Foreword from the Chairman of the Board | 3 |
| 2. MD's Report | 4 |
| 3. Governance | 5 |
| 4. Programmes Report | 10 |
| 4.1 Education and Prevention | 10 |
| 4.2 Support and Care | 11 |
| 4.3 Counselling and Spiritual Support | 12 |
| 4.4 Women's Shelter | 13 |
| 4.5 Income Generating Programmes | 14 |
| 4.5.1 Urban micro-entrepreneurial farming (Community Gardening) | 14 |
| 4.5.2 Charity Shop Sales | 14 |
| 4.5.3 Detergents and sales | 15 |
| 4.6 Humanitarian Relief | 15 |
| 4.7 Stakeholder Relations | 16 |
| 5. Key Highlights | 16 |
| 6. Human Resources | 18 |
| 8. Treasury Report | 22 |
| 9. Acknowledgement of donors | 26 |
| 10. We cannot wait to hear from you: | 27 |

1. Foreword from the Chairman of the Board

The year 2020 will be remembered as the most challenging and difficult year in the 21st century. With little warning on what was to unfold, the Covid-19 pandemic has shaken the entire world to unimaginable levels. It has changed the lives of so many people. King's Hope was not spared from this challenge. We had to adapt in order to survive. While we set our hopes on a vaccine, little is known about its efficacy and the manner in which it will be rolled out to the many millions of ordinary citizens. We are purely depending on government interventions to pave the path for our survival.

This challenging era, also proved that good can emerge from such challenging situations. The period of lockdown saw many families losing their jobs and going hungry in Olievenhoutbosch, a densely populated township that to a great extent relies on part-time employment. During this period, our retail donors stretched out their hands in meeting the challenge. King's Hope was able to feed hundreds of families several times a week in response to the food crises in the area. As with many other effects from the epidemic, more than the usual number of women were admitted to the shelter due to partner abuse, evictions, and other reasons leading to homelessness. Our programmes, albeit altered, managed to run through the hardest peaks of the epidemic while, by the grace of the Lord, all our staff members remained Covid-19 free. Prevention measures learned in the past programmes with HIV and TB prevention, were implemented in order to preserve the lives of both clients and staff. In the form of adapting to the new normal, our programmes forged ahead with renewed hope for funding to sustain our growing operational needs. We remain hopeful that even the pandemic cannot halt our commitment to the work dedicated to serving the community of Olievenhoutbosch.

I thank the Managing Director, and the dedicated and diligent staff for their continued support for the community. Their faith and belief in the work to be done is an example of putting the command of our Lord in practice "to love all". I also thank the Board for being available to provide wisdom.

May God bless our community.

2. MD's Report

King's Hope operations had to be re-adjusted while the core of our survival spurs us to remain committed to the community we serve. Never before has the need to avert loss of life and bring some sense of normality become so urgent, at a very large scale. The staff members and women at the shelter had to make immediate changes and get used to Covid-19 protective practices such as wearing of masks, sanitising and socially distancing amongst themselves and when interacting with communities during outreach.

Economically, the organisation faced challenges as donors were unable to sustain their commitment to King's Hope. This required of us to be strategic and consider alternative income streams while keeping community members who suffered job losses hopeful that nutritional support will be sustained amidst Covid-19 challenges.

Many economies, businesses and companies have been badly affected by the pandemic. The global death rate has passed a million mark and other countries continue to experience a second wave of the virus. Our heartfelt condolences to all those who have lost their loved ones as a result of the pandemic and those who are still fighting this battle around the world. There is a fear that we might be experiencing a second wave as a country with cases starting to increase especially in Eastern & Western Cape areas.



3. Governance



JOHN STANBURY
THE CHAIRMAN

John Stanbury serves as the Chairman of Board of Directors for King's Hope. He has extensive background in business where he served at executive levels in a range of industries, all operating on the international front. He holds the following qualifications: BSc (Eng), BProc, LLB and MBA. He is a Fellow of the Southern Africa Industrial Engineering Institute and a Professional Engineer and an admitted Advocate. His experience includes many years in the engineering and minerals beneficiation sectors, contracting and in industrial production. Through his work, he gained valuable experience in strategic planning, corporate governance and implementation of efficient strategies to build and grow ailing businesses. At King's Hope, his main role is to lead the strategic direction of the organisation, preside over meetings, hold board members accountable for their designated responsibilities as well as oversee good governance principles. As Chairman, he sets goals and objectives with the board and ensures support to the managing director.



PASTOR KABELO BAHENTSE
MANAGING DIRECTOR

Pastor Kabelo Bahentse is the Managing Director of King's Hope and a Pastor of a local church in Olievenhoutbosch. He has been involved with King's Hope since 2011 and has a great passion for community work, reaching out to the needy and disadvantaged as well as ministering hope to the less privileged. He has been a Managing Director of King's Hope since 2014. He is responsible for the development and implementation of the organisation's business strategy, preparation and overseeing the operational plan as well as overseeing the organisational financial performance. He supervises a team of 9 employees while ensuring that daily targets are met as set out on the operational plan. Pastor Kabelo graduated in Theological Studies from Rhema Bible College with a further diploma obtained in Theology in 2010. He has been pastoring a local church for 11 years and draws much inspiration from his work at King's Hope. He is currently studying towards a degree in business administration.



GERRIT KORNELIUS
BOARD SECRETARY

Gerrit Kornelius serves as the board secretary and is one of the longest serving members of the board at King's Hope. He is semi-retired professional engineer and holds a BEng (Hons) Chem, MBA and PhD with experience acquired in engineering consulting and as lecturer in the Department of Chemical Engineering at the University of Pretoria. Prior to this, he worked for a major petrochemical company in environmental engineering field. He represents the deacons of the Rietvallei (Pretoria) Reformed Church on the Board of King's Hope Development Foundation. He has served in various positions during the past twenty years. Gerrit keeps the organisation compliant to all statutory requirements and assists with professional networking. His roles entails keeping and sharing of minutes, overseeing formal compliance to SARS and CIPC requirements and overall administrative details of the organisation. Gerrit is not just passionate, but he is detailed, diligent and meticulous in all his duties.



CHRIS DE KLERK
TREASURER

Chris de Klerk serves the King's Hope board as Treasurer. A semi-retired professional, Chris has not slowed down that much and he is still involved in consultancy projects and other work that support good financial accountability. He has years of experience accumulated in the motor, banking, mining, forestry and food distribution industries where he held very senior positions. Chris is passionate about numbers and accountability which ties in well with his role of ensuring accounts are reconciled, financials are produced and the annual budget is prepared. He also oversees all financial compliance of the organisation while constantly reviewing and auditing the operational budget. Chris is suitably qualified with the following under his belt; BCom Accounting, Business Economics; Hons. BCom, Cost Accounting and Business and MCom. In addition, he is a registered practitioner offering both South African and International Income Tax related services



REVEREND AWIE VERHOEF
BOARD MEMBER

Reverend Awie Verhoef is a board member and pastor at the Reformed Church in Wierda Park where he has served full time for the past 19 years. Previously, he served in Kimberley and Sasolburg ministries before moving to Pretoria. For the past few years he has been involved nationally in advancing missions in the Reformed Churches of South Africa (RCSA). Awie holds the following qualifications; BA, Th.B, MA Biblical Counseling and has over the last ten years, used his qualifications to counsel, advise and shepherd community members at King's Hope. He has been instrumental in the development of self-sustaining initiatives and the empowerment of the community in changing their circumstances. He believes the community has tools to lead sustainable community initiatives, especially with the community vegetable garden. He strongly believes that in operating the vegetable gardens at King's Hope as a business, the organisation will eventually be self-sustainable.



BUYISILE HLABANO
INDEPENDENT CONSULTANT

Buyisile Hlabano is an independent consultant serving the board in strengthening stakeholder relations, communication and in special projects. She is a professional with over 20 years working experience in non-governmental organisations, state owned entities and the corporate sector where she gained experience that she is currently using as a trainer and facilitator as well as consultant on anthropological issues. She has over 10 years working and contributing to strategic and operational issues in underprivileged communities responding to both health and social issues. Her key interests are in community development, capacity building of NGO's, promotion of good governance and ethics and translating strategy into practical work plans. Buyisile holds the following educational qualifications - BA Communication; BA Hons in Anthropology and Post-Graduate Diploma in HIV and AIDS Management. She uses her background to continually improve the programmes at King's Hope.



ASNATH TEFFO

FOUNDING DIRECTOR OF DIMPHONYANA
TSA LAPENG CHILDREN'S HOME

Asnath Teffo is the founding director of Dimphonyana Tsa Lapeng Children's Home. After her matriculation in Limpopo, Asnath obtained her diploma in Nursing and later another qualification in Early Childhood Development and in Theology Studies. Upon moving to the community of Olievenhoutbosch, she was propelled to open an ECD Centre given the levels of needs in the community, particularly the children, who were subjected to hunger, abuse and all sorts of neglect. She proceeded to start income generating programmes, including venue hire, tools, gardens and an ECD Centre. Asnath has been involved at King's Hope since inception in 2002, stating out as a volunteer before proceeding to being the Managing Director. She currently sits as a Board Members responsible for Partnerships and Networking.



KEDISALETSE MORODI

Kedisaletse Morodi is a career woman and holds a National diploma in Human Resource management, BCom degree in Human Resource Management from UNISA and 23 developmental certificates in the field of HR including a Biblical Certificate. She has 24 years' work experience in various HR areas where she worked her way up from operational level to middle and senior management. She is competent in HR strategy formulation, facilitation, talent management, HR Systems, compliance and HR Risk Management. She has served in Retail, Public service and labour movement. She currently works in the agricultural sector. She believes in servant leadership and her role at King's Hope involves HR related matters and the review of all policies. She has previously served in different HR Sub Committees to the board of different companies such as Sentinel, Habitat for Humanity, Mining Health and Safety Council, Centurion Christian School, Daughters of the King and Enterprising Africa Regional Network.



PORTIA TSHIBALO

Portia Tshibalo is a dedicated professional woman with lots of experience working to realise change in the most disadvantaged in the community. She is passionate about working with women and children. She currently serves in the senior management team of King's Hope and sits on the board of directors as one of the two employee representatives. Key to Portia's success is her robust capacity to work closely with stakeholders such as the local police station, clinic and the network of social workers. She currently serves as the Shelter Manager and ensures safety of women, advocates for rights of the disadvantaged and promotes an environment that is victim centred. Portia's love for change in the community influenced her choice of studies. She holds a Degree in Psychology (Counselling), Certificate in Social Auxiliary Worker, Diploma in Office Administration, and a short course on Public Financial Management for Non-Financial Managers. Through Foundation for Professional Development (FPD), she pursued a course in Introduction to Monitoring and Evaluation Course and HIV Rapid Testing Course for Allied Health Care Workers.



SONNY NTIWANE

Sonny Ntiwane serves as the second employee representative on the board. This role ensures constant communication between the board and employees is maintained at all times. Sonny's role in the organisation is to provide security services; primarily the protection of the property, personnel and safety of the clients.

4. Programmes Report

King's Hope was established as a faith-based organisation in 2002. Initially, the organisation provided care to orphans, food to the hungry and home-based care services to those living with HIV and AIDS. King's Hope also ran an in-patient unit providing end-of-life care for several years. However, this focus changed in 2004 when the South African Government started providing ART's and the need to focus on terminal care decreased. However, there has always been the need to offer care and support to people living with HIV as they were constantly dealing with issues of stigma and discrimination as well as integration with their loved ones. The organisation has been supportive in meeting most psychosocial needs in its service offerings.

In 2007, King's Hope started a programme which included facilitating support groups, where people living with HIV are able to meet with their peers and openly discuss issues such as treatment adherence, disclosure, social support and preventing HIV transmission to their loved ones. In 2010, the organisation began providing intensive health education with the aim to reduce HIV transmission in the wider Olievenhoutbosch's community. Services were extended to orphaned and vulnerable children as well as psychosocial care which intensified in 2011. In 2017, King's Hope responded to the need to start a shelter for abused and destitute women and children. The organisation is in the process of finalising required government regulations for running a shelter. In 2020, the organisation added ad-hoc services to respond to poverty imposed by the Covid-19 pandemic.

King's Hope is continuously adapting in order to remain relevant amid changing conditions around HIV and persisting psychosocial needs, ensuring the most efficient use of resources. Funding remains the crucial oil that keeps fires burning at King's Hope.

4.1 Education and Prevention

Nearly 2000 adolescent girls in South Africa between the ages of 15 and 24 are infected with HIV each week and this is according to UNAIDS. Transmission rates amongst adolescents in the Olievenhoutbosch area remains a concern given the high number of inter-generational relationships / largely driven by poverty and peer pressure. Efforts to eradicate the advent of HIV, TB and AIDS can only be effective where education and prevention efforts remain a focus in communities. King's Hope focuses on the following aspects in this regard:

- Education on the importance of completing the course of medication, regardless of improvements the client might be feeling, especially for those with TB and taking ARV's.
- Improving compliance by educating on the understanding the dosage, dosage times, and packaging of different medication the client is using.
- Educating mothers on methods to prevent mother to child transmission to their unborn baby. These include safer delivery methods and exclusive breastfeeding.
- Basics of hygiene and its value in staying healthy.
- Educating on the relationship between alcohol and medication.
- Educating clients on safer sex to avoid re-infection.
- Assessment of means of survival to assist where support is needed, e.g., financial, psychosocial and psychological.

Clients often refer other people who need help to King's Hope. This means the source of clients does not remain the local clinic area but beneficiaries who gain value from the services.

The team is involved in the promotion of testing, especially to young girls and women coming for antenatal care at the local clinic. The aim is to increase access to comprehensive HIV services, promote early detection and initiation to ARV, which can be life-saving.

One of the biggest challenges to education and prevention efforts in the current year are restrictions brought along by the Covid-19 pandemic. This pertains to restrictions aimed at minimising large numbers at gatherings. This meant moving away from the clinic to focusing at client homes and on site educational sessions. Prior to the Covid-19 pandemic, King's Hope reached about 80 clients through health talks per week at the local clinic, and ultimately reaching about 240 clients per month. Our hope lies in the successful roll out of the vaccine as HIV transmission figures tells us that there is still need to strengthen capacity at our health care centres.

4.2 Support and Care

South Africa still finds itself facing the double impact of high interactions between TB and HIV. When clients are referred to King's Hope, they receive weekly visits at their homes to ensure that they get the support and care, especially those who have recently tested HIV positive and those diagnosed with Tuberculosis. Support and care is offered to clients on an ongoing basis in the form of:

- Counselling to clients and families. We believe that families are crucial in providing on-going support to the client, especially when they are too ill to care for themselves.
- Food provision. Due to high unemployment rates, the effects of Covid-19 and the large number of patients receiving HIV

treatment in the area, people require nutritional support for optimum health and ability to take treatment on full stomachs. Basic foods provided to clients include mealie meal, cooking oil, tinned food, beans, sugar, tea and toiletries.

- Referrals to the Department of Social Development (DSD) for all social needs like Identity documents applications, child support grants, disability grants, etc. These are offered at no cost to the client.
- Transport services for clients who are sick and need assistance to the local clinic, hospital visits to Kalafong and Laudium Hospital and to SASSA services, especially the elderly. Pregnant ladies and those residing at the shelter also benefit from this service.

It is our reality that people living with HIV and TB still face stigmatisation, marginalisation and discrimination from the community, which in turn increases their vulnerability to HIV and AIDS. Given the background of women and children living with HIV in our care, the need for Social Worker services cannot be underestimated. Issues dealt with range from grief and loss, pain and many others.

With interventions from Social Services, women are assisted with the following issues:

- Negotiating safer sexual relations with their partners.
- Identification of social functions of clients and facilitate actions that support healing and self-care.
- Promoting access to social needs and linking them to appropriate resources.
- Equipping clients with safe and ethical disclosure methods to family members whilst protecting due confidentiality.

4.3 Counselling and Spiritual Support

On weekly basis, our Health Care Workers meet with clients at the centre who have been referred by the local clinic for counselling and support. Weekly meetings comprise of health talks, promotion of adherence to treatment and sharing of personal achievements and spiritual counselling. As home visits could not be sustained, to ensure safety of both the workers and the clients during the pandemic, this service had to be curtailed. Prior to the pandemic, about 100 counselling sessions were done on monthly basis. The number is slowly picking up as operations slowly resume.

Factors such as the high unemployment rate, lower levels of education and high crime rates renders the Olievenhoutbosch community with great psychological and social challenges. As such, people living with HIV and AIDS experience a variety of psychosocial stressors that can adversely affect their lives.

On daily basis, King's Hope conducts Bible-based spiritual lessons which have impacted the lives of many community members. Besides the daily morning devotions, support group receive weekly devotions as part of ongoing spiritual support. This is a reach of about 240 spiritual sessions offered at King's Hope.

4.4 Women's Shelter

In the short time since its establishment in 2017, the shelter has housed about 169 women and 64 children for various periods of time. The women's shelter was established to facilitate the self-empowerment of women and children experiencing abuse and/or violence by providing support and advocacy services during their time of transition. The place offers a safe and confidential space where no judgement or prejudice exists. As such, only our partners such as Olievenhoutbosch Clinic and Olievenhoutbosch Police Station, Wierdabrug Police Station, Lyttleton Police Station, Khuluma Family Council and COSAPU can refer women to the shelter. For legal purposes, an affidavit and form 36 detailing each case is required. To date, women from all parts of Southern Africa have been admitted, these include Lesotho, Zimbabwe, Northern Africa and Nigeria. While in residence at the centre, women are provided with emotional, psychological, physical and spiritual support.

A key achievement in this programme was enrolling the services of a seasoned and passionate Social Worker engaged in mid-2019 to offer trauma counselling services to women at the shelter. Despite being halted at the height of the pandemic, the service was resumed by DSD Social Workers with a focus on mental and emotional recovery, self-empowerment, and preparedness for re-integration for when they leave to reconcile with their families or starting new lives altogether.

Women at the centre generally face challenges such as:

- Experiencing domestic abuse from partners.
- Unsafe living condition at home.
- In transition after unexpectedly moving to urban areas.
- To establish possible options for starting a life free from abuse.

The Shelter manager is also a qualified Social Worker. Her core responsibilities include ensuring that all legal requirements are met, proper client documentation is maintained and that the dietary and physical needs of both women and children are met. Social Worker appointments are planned and attended. The shelter operates, more like a home where all women assist with daily chores. Despite having two house mothers who help oversee the place, clients are involved in cleaning, preparing of three meals and the upkeep of the place.

School-going children are assisted with enrolment, uniform and transportation to the local school. Transfer of skills for women at the shelter remains a vital goal in order to prepare them for the world of work and decrease financial dependence on their partners or spouses. Currently, women can work in the garden or attend sewing lessons. Computer skills classes are in the pipeline to ensure women are skilled on basic IT skills to help them get ready for the world of work.

4.5 Income Generating Programmes

Three areas form part of the empowerment programme initiatives; these include gardening, charity shop sales and selling of detergents. These programmes are aimed at decreasing reliance on external support while increasing opportunities for our clients to be self-sufficient. Our target is to increase ownership of the programmes so they are owned by community members.

4.5.1 Urban micro-entrepreneurial farming (Community Gardening)

Prompted by high levels of unemployment in the area and the demand for food while taking treatment, the community garden at King's Hope now stands as a symbol of hope through providing increased food security and in modelling food sustainability for the people of Olievenhoutbosch. With the initial aim of providing food to people living with HIV and TB, many people have been educated on starting their gardens in their own backyards. These skills continue to fight issues of unemployment in the area as the gardens have grown in size and production and serve as a market area where both locals and traders buy from the centre. On weekly basis, about 45 bundles of kale are harvested from the gardens. By the end 2019, eight people were working in the gardens and bringing additional income to their families.

The harvest from the garden is also used for food provision at the shelter to help provide for healthy and organic choices for women and children. This is particularly important for clients with compromised immune system and children who may have faced malnutrition before being admitted to the shelter.

Below are garden sales figures for the year 2020 alone

| Jan | Feb | Mar | Apr | May | Jun | Jul | Aug | Sep | Oct | Nov |
|------|------|------|------|------|-------|-------|------|------|-------|-----|
| R660 | R730 | R685 | R716 | R745 | R1476 | R1572 | R231 | R698 | R2131 | R79 |

4.5.2 Charity Shop Sales

All forms of donations are welcome at King's Hope. While clothing is shared with the women at the shelter, a great portion of donations become inventory for our weekly jumble. Because the shop closed during hard lockdown, some months dwindled in stock and sales. However this initiative remains crucial in bringing much needed income to the centre.

The table below shows sales figures from the charity shop

| Jan | Feb | Mar | Apr | May | June | July | Aug | Sept | Oct | Nov | Dec | TOTAL |
|------|-----|-----|-----|-----|------|------|------|------|------|------|-------|-------|
| R130 | 20 | 0 | 0 | 0 | 0 | R60 | R155 | R226 | R517 | R790 | R2667 | R4565 |

4.5.3 Detergents and sales

Detergents are bought for reselling purposes. This initiative was established based on the needs for cleaning in the community. While this was halted for a few months during the pandemic, it has the potential to become a source of income in the near future. The detergents are sold in the community and the proceeds are accounted for below.

The table below shows sales figures from the charity shop

| Jan | Feb | Mar | Apr | May | June | July | Aug | Sept | Oct | Nov |
|-----|-----|-----|-----|-----|------|------|------|------|------|------|
| 0 | 0 | 0 | 0 | 0 | R875 | R295 | R100 | R255 | R780 | R360 |

4.6 Humanitarian Relief

Since inception, King's Hope realised the need to evolve, based on the needs and circumstances within the community of Olievenhoutbosch. The current situation caused by Covid-19 has elevated the crisis our people are facing. With food donations received from partnerships entered into with several retail outlets who share the same vision to increase food security and reduce poverty, a food bank was established to service new groups in areas in distress. The groups include men on the road who canvass daily for work on the suburban street of Centurion, women begging alongside robots left unemployed due to lockdown around the Centurion area.

While food parcels form part of weekly provisions for support group members living with HIV and TB, the weekly drive to newly identified areas gave hope to many who would have otherwise gone back home

with no income and an empty stomach. With the loss of work and restricted movements, many families were left destitute and without basic food supplies.

4.7 Stakeholder Relations

Building strong and appropriate relationships with key stakeholders remains the cornerstone of the work done at King's Hope. This has not only informed the work we do but has strengthened the relevance of King's Hope to our community and has increased our service offering. King's Hope is engaging stakeholders at three levels of partnerships; i.e. local, provincial, and national. While the success of the work we do relies heavily on our local partners and to some extent on provincial government departments, national and international partners remain critical for their roles as funding partners and in providing space for shared learning experiences.

From inception, relations with the local clinic ensured the growth and success of our work. Partners like the Police stations, Olievenhoutbosch VISPOL, COSAPU, Dimphonyana Centre, Khuluma Family Counselling and the Gauteng Department of Social Development are critical to the development work done at King's Hope. We continue to search for meaningful and lasting funders to support our work and share in shaping better lives for the Olievenhoutbosch community. The sell by food, which is in perfect conditions, is packaged to form part of food parcels which in turn supports the members of the support group.

5. Key Highlights

Most Welcomed

- King's Hope Women's Shelter experienced a higher than usual number of admissions during this reporting period. This was directly linked to loss of jobs which resulted in loss of income and increased need for shelter, domestic violence at home and various other social factors.
- The community garden flourished in the middle of the pandemic making it the highest income generating initiative for King's Hope during 2020.
- New distribution areas were identified and maintained in the distribution chain as part of our humanitarian relief programme.

With food donations from local branches of Spar, Woolworths and Pick n' Pay, more families were reached at the most critical times of the pandemic.

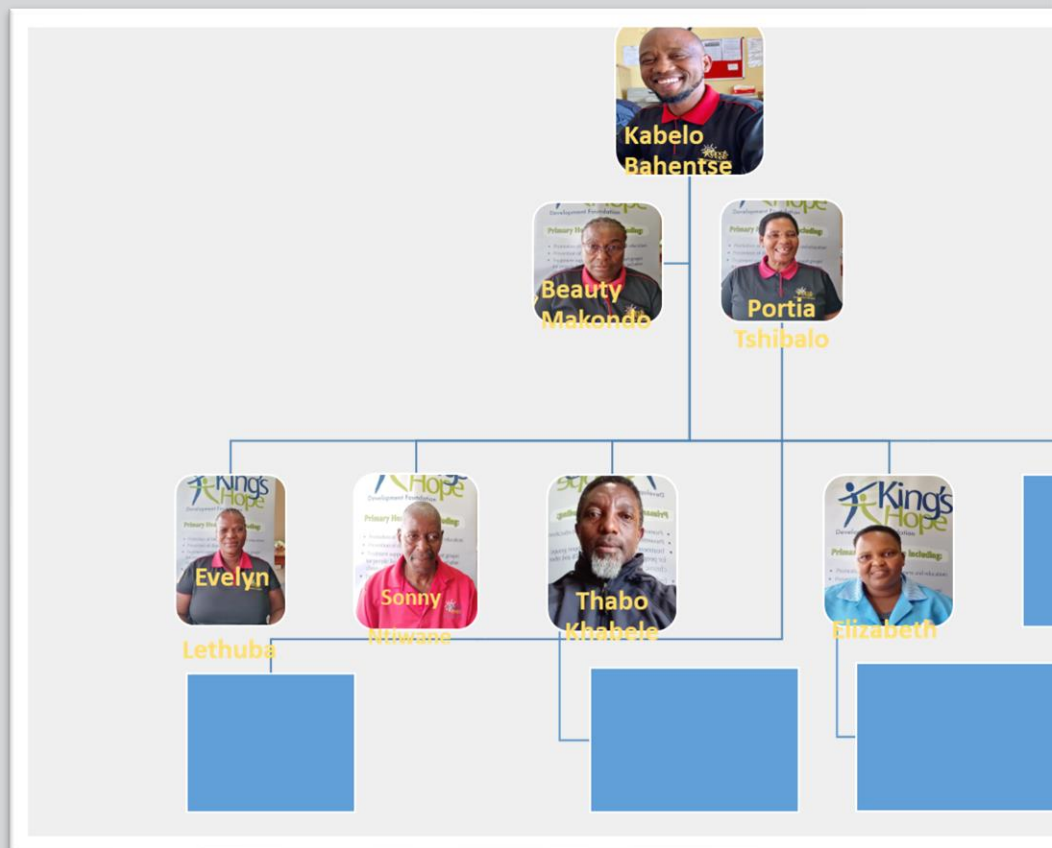
- ✚ Our new clients are showing increased adherence to treatment, thanks to our continued efforts on awareness and information on treatment.
- ✚ An emerging interest in second hand clothing has helped the organisation to start a Charity Shop Jumble Sale initiative. The aim is to generate more income for King's Hope.
- ✚ King's Hope hosted an Estate and Wills workshop in the beginning of 2021 and it was attended by about 35 community members. The aim was to help reduce family conflict when loved ones pass on.
- ✚ When operations were halted at the height of the pandemic, a safe yet practical return to duty plan had to be developed before employees could report back to duty. We are grateful that no employee at King's Hope was infected by the Covid-19 virus and all continue to observe all safety protocols in and outside the workplace.
- ✚ About 220 people benefit from family relief pack which provides basics such as rice, soya and mixture of dehydrated lentils, peas and vitamins. This balanced meal is able to support a family of six on weekly basis.

Most Challenging

- ✚ Funders reduced their support and some managed to only give 50 percent of their original commitment, leaving critical line items like salaries at risk.
- ✚ Some of our clients on the support programme lost their jobs during level 5 lockdown and they could not be reached due to restrictions on movement in the area.
- ✚ The school transport services was halted as schools closed and re-opened at intermittent times, resulting in loss of income from that initiative.

6. Human Resources

ORGANISATIONAL CHART



Greetings from our Team:

- ✚ Kabelo Bahentse- I am the Managing Director at King's Hope.
- ✚ Portia Tshibalo – I am the Shelter Manager and responsible for managing operations at the shelter. Protection of women and children is my passion.
- ✚ Beauty Makondo- I am the Sewing manager and am responsible for the overall management of the OVC (Orphans and Vulnerable Children) programme.
- ✚ Evelyn Lethuba I am the Data Capturer, Support Group Coordinator and IT Support person. I support the administrative duties for the Department of Health programmes and HPCA.
- ✚ Thabo Khabele – I am the dedicated Driver responsible for transportation of patients, students and staff as needed.
- ✚ Elizabeth Khoarai I am the House Mother at the Shelter and help provide love and care for survivors of violence and abused children.
- ✚ Maria Shirinda - I am one of the House Mothers ensuring a warm and supportive environment for survivors of violence and abuse at the Shelter.
- ✚ Sonny Ntiwane – I make sure the place and the people are safe at King's Hope.
- ✚ Moven Ndebele - I am responsible for the safety of all our clients and staff.
- ✚ Martin Moyo - I work to protect King's Hope property, the people and clients.

Success Stories

1.

When I first came to King's Hope, I was in need of any work they could offer. So I started out as a volunteer, working as a Community Care Worker. This involved going to the field, meeting people living with HIV, TB and other chronic conditions. I would take the sick people to the clinic, help with taking medication correctly and educate them of hygiene issues. I was interested in developing myself further, so when courses became available, I made sure I learnt as much as I could so I can better the lives of the people around me. I knew that information is power and if I was better informed, so it would be for my community. To date, I have several course under my name. I did a short course on HIV awareness, TB DOTS, Adherence Counselling, 69 Days training on Home Based Care and one called Free to Grow. This course taught me how to manage finances, understand Self better and presentation skills. Later I enrolled in a computer course for which gave me skills to report better on my work. I have grown a lot as an employee. I moved from being a Community Care Worker to a Data Capturer, Facilitator then to a position of HTA Manager. I am more confident, I share openly and can motivate others easily. I am financially independent because of this job, and the biggest benefit is being a Christian. I love that my job connected me and I have a relationship with God.

By Evelyn Lethuba

2.

I was met by Community Care Workers and they invited me to King's Hope. At the time, I was working as a waste collector in the community, I was hardly surviving. At the time, I was struggling with alcohol and cigarettes and had lots of anger issues. My life has changed a lot. I know that counselling helped me to be a better person. At King's Hope, they taught me to know how to solve my problems in a meaningful way and equip me in my interactions with my family. I really thank Pastor Kabelo for providing spiritual counselling and prayers which have helped me so much. I don't know how my life would be if it wasn't for King's Hope. Today; I live well, I eat healthy foods and have clothes to wear through provisions we receive. I now work in the community garden which serves as a therapy for me because it helps me to stay away from temptation of alcohol and other bad things. The support group also played a big role in my life by discussing and sharing our day to day challenges with others. My temper is under control and my stress levels are very low and I am focused as a person. I managed to stop smoking and drinking alcohol and have been living clean for few years now. I keep a section

of my own in the garden, from this, I am able to sell my harvest in the community. Many community members love the vegetables from our gardens as they are always fresh and our services are reliable. I worked in the gardens even during lockdown. This allowed people to have food when times were hard.

Keep up the good work.

Kate Damons, (Support group member)

3.

I would like to thank God for the year 2020, it was a tough year but King's Hope helped me a lot. Since joining the organisation, I attend support groups every week. This has made my faith strong as a person. I have learnt other skills like sewing and using wool to make baby clothes. It makes me happy when I see that people love the baby clothes I make. Today I teach other ladies on how to use wool. King's Hope gave me an opportunity to work in the garden and I'm able to put food on the table. I couldn't read the bible before but I can now read and understand the bible through the support of King's Hope. I appreciate the support we get, especially the food and clothes that help support our families.

Thank you for giving me hope during difficult season of Covid-19.

Josephine Dlongolo (support group member)

4.

My life was going well until I lost my husband. Soon after that, my in-laws chased me away from a place that we shared. This was a very difficult time for me and my children. I went to the clinic to look for help and that is where I was referred to King's Hope. I received counselling over time and this helped me realise my options in life. I started applying for social grants to help with school and started to look for a job to support myself and find a place I call home. Now I am independent, my kids are going to school and I am an active member of the support group. I have gained weight and find myself in good space emotionally and spiritually.

I would like to thank King's Hope for everything they have done for me and for welcoming me in this beautiful centre of hope. I was hopeless but the support I got was amazing. I was a defaulter on medication and struggling to take my medication but through attending support groups I now drink my pills correctly. To hear others sharing their stories helped me to accept my status and be positive towards life and I feel so relieved. I would like to thank particularly Pastors, Evelyn, Portia and others for their love and warm welcome.

May God be with you all.

Elizabeth Khosa (Support group member)

5.

I'm grateful to King Hope for all the help I got from the organisation. I had nowhere to go and the Social Worker at the Police station referred me to King's Hope Women's Shelter and they provided me and my two kids with accommodation. My husband was abusive, when he was drunk and would start to fight with me. One day I could not take it and fled to seek help. King's Hope gave me accommodated and provided counselling for me and my husband. We attended sessions together and today, my husband is no longer abusive towards me. The centre also helped my disabled child who now attends Olieven Disability Centre and is doing much better. I left the shelter feeling empowered as I learnt skills there. Today I help other ladies to speak out against domestic violence, I encourage them to seek help and not keep quiet. King's Hope, I cannot thank you enough.

Maleshoane (Former Woman's shelter client)

8. Treasury Report

King's Hope financials are audited independently by DNL Associates and were received for the year 2020 by end of March 2021. The annual financial statements are prepared in accordance with the International Financial Reporting Standards for Small and Medium-sized Entities and are based on appropriate accounting policies consistent with prudent judgement and estimates. The board of directors takes the responsibility of ensuring appropriate infrastructure is in place, systems of internal control are applied and cash flow forecasted for the year is accounted to enable responsible accounting of finances within the organisation. To date, the organisation has been able to produce unqualified financial statements since its incorporation.

The following page gives the income and expense for the most recent audited year. The food donations from local retailers are in kind, and are not shown in the financial accounts. A recent valuation at retail prices showed the value of this relief action to the community to be just over R 2 million per year, or approximately R 167 000 per month. That is the equivalent of about 500 people a month given the Covid-19 emergent food relief amount.

King's Hope Development Foundation NPC

(Registration number: 2002/000146/08)

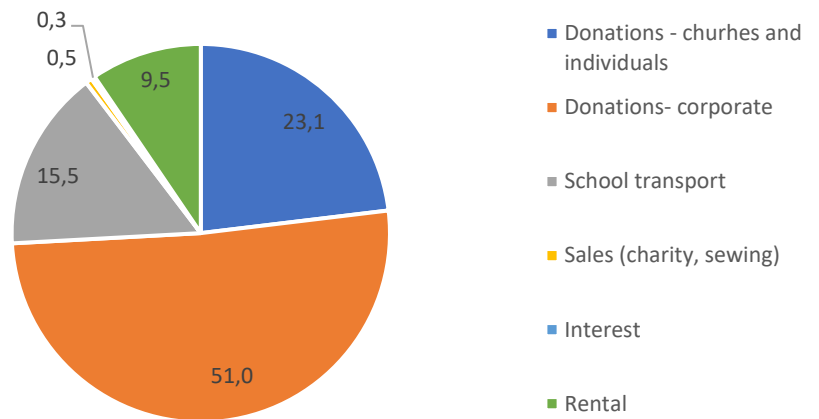
Annual Financial Statements for the year ended 31 March 2020

Statement of Financial Performance

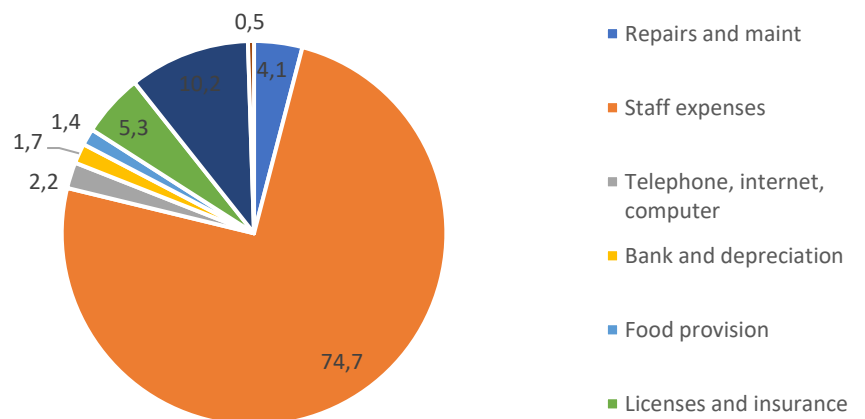
| | Note(s) | 2020 R |
|--|---------|------------------|
| Revenue | | 697,127 |
| Donations and contributions | | 697,127 |
| Other income | | 243,186 |
| Charity shop | | - |
| Bag sales | | 5,156 |
| School transport | | 145,748 |
| Interest received | | 3,039 |
| Insurance payout | | - |
| Rental received | | 89,243 |
| Total income | | 940,313 |
| Expenditure | | (987,805) |
| Bank charges | | 11,119 |
| Cleaning | | 924 |
| Computer expenses | | 2,052 |
| Depreciation | | 5,428 |
| Food provision | | 13,811 |
| Functions | | 1,952 |
| Insurance and license fees | | 50,131 |
| Motor vehicle expenses | | 100,361 |
| Printing and stationary | | 2,143 |
| Rent and municipal expenses | | 2,000 |
| Repairs and maintenance | | 40,064 |
| Subcontractors | | 738,215 |
| Telephone and internet | | 19,605 |
| Surplus / (Deficit) for the year | | (47,492) |
| Retained surplus at the beginning of the year | | 355,621 |
| Retained surplus at the end of the year | | 308,129 |

The following graphics shows a further breakdown of the income and expense for the year ended March 2020, as well as the income trend for the last seven years.

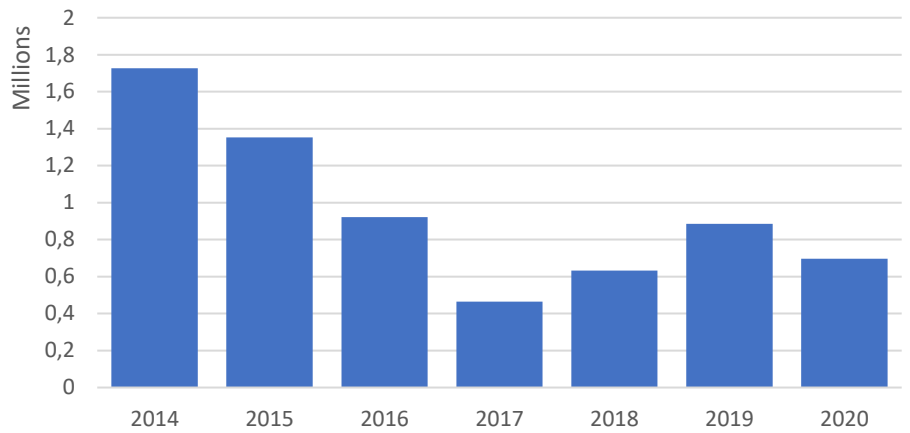
Income sources (percentage) 2019/20



Expense categories (percentage) 2019/20



Annual income trend



9. Acknowledgement of donors

King's Hope is super grateful for the support received from all our donors. Without your support, we could not have changed the lives of thousands of the beneficiaries we serve.

DONOR LIST:

- Pick 'n Pay- Centurion
- Lightstone –Centurion Branch
- Melodi Ya Tshwane URCSA (Ward 3)
- North Park Telecoms
- PURCO SA
- Reformed Church (Wierdapark)
- Reverend Geoff Van Schie (Australia)
- The Presbyterian Church in Canada Rietvallei Church (Erasmusrand)
- Silcom (Pty Ltd)
- Spar - Celtis Ridge Branch
- Hope Restoration Ministries -The Reeds Hope Connect
- Woolworths (Centurion Mall, Blue Hills, Wierda Park & Blu Valley)
- ZZ2
- Iqraa Trust
- Horace Alfred Taylor Will Trust
- The true Colours Trust
- Tshwane International Churches of Christ- Centurion Family Group

10. We cannot wait to hear from you:

Physical address: Address: Plot 51| Olievenhoutbosch| PO Box 55810|
Wierda Park 0149

Contact person: Kabelo Bahentse (Managing Director)

Telephone number: Mobile +27 82 067 8067 or +27 12 652
0033

Email address: info@kingshope.co.za or
md@kingshope.co.za



Glossary

HIV – Human Immunodeficiency Virus

AIDS – Acquired Immunodeficiency Syndrome

ART- Anti Retroviral Therapy

ARV _ Antiretroviral Drugs

COSAPU – Community Substance Abuse Programme

DSD – Department of Social Development

UNAIDS – The Joint United Nations Programme on
HIV/AIDS

PrEP- Pre-exposure prophylaxis

Our King's Hope

The sight of iron zinc, brick and tyres all around me.

Screams of children, from every corner I hear.

The hooting is endless, touting for potential customers to various directions.

Hawkers pulling their wares, any open spot, a market place is formed.

A red brick house here, a white one there, they are all commonly small and define the area.

A car splashes into a puddle of water, hidden under a long forgotten pothole.

The air is thick with fumes, fried meat, grilled chicken, take-aways for the life on the fast lane.

School children clad in their uniforms, walking free spirited, with hopes in their hearts.

Empty liquor cans, broken bottles, a tale of daily dependence and fights erupting thereafter.

Screams at night, loud shouts of chaser and the chased.

Up the road, right at the perimeter of the area, the large structure opens its doors.

Withstanding the HIV era, women abuse, now Covid-19, the structure stand firm as footsteps make their way in.

The house is a home, full of warmth, safety and a sprawling garden of hope.

The children sing joyfully, women smile and fathers pray. Dignity Restored.



Information bites to include:

- 1008 meals were served in 2020 at the Women's Shelter.
- On monthly basis, 50 clients keep poverty at bay from food hampers consisting of rice, oil, sugar, tea bags, salt, sugar beans and a soap bar.
- Intervention calls with families are made weekly to countries like Nigeria, Burundi, Lesotho, Zimbabwe and Kenya.
- About 50 people were fed twice a week during lockdown as part of our Humanitarian relief.
- Our two drivers collected food for Humanitarian relief every six days of the week for a period of eleven months, helping reduce hunger in the area.
- On average, 12 sessions are conducted by Social Workers at the centre to help women deal with issues of domestic violence.
- 12 Stakeholder meetings were held with partners in the area to improve service on TB and HIV related services.

